



**Kinson Drive,  
Bonehill Road,  
Tamworth, B78 3JF**



Start **12.06.17** Finish **15.09.17** Duration **14 weeks**



Value **£900k**



**Project Manager  
HCT Construction  
Consultants Ltd**



**Client  
Jardine Motor  
Group**



**Architect  
SDA  
Architects**



**Form of Contract  
JCT Design & Build  
2016**

## JARDINE AUDI, TAMWORTH 6-BAY VALET BUILDING

### Introduction

Delivered through the Jardine Group Framework this project comprised the design and construction of a new 6-bay valet building to the existing dealership.

In addition all associated mechanical and electrical services were installed, together with a new 260 space car park, fencing & gates, drainage, lighting and other sundry external works.

All works completed whilst the garage was in operation.

### Initiatives

A number of initiatives were implemented during this project including:

- Out of hours work. This was to work around the client who had to have the grage operation and run 'business as normal'
- We also completed white lining out of hours so that there was minimal disruption car parking.
- Although there were no residential properties near to site, we supplied pre-start information and



Very pleased with the building and the work Ashe have carried out. More than happy to work with Ashe again and would recommend Ashe on a forthcoming project.

**Paul Birks**  
Project Manager,  
HCT Constrcution  
Consultants Ltd

company contact details to the local businesses.

- Hedgehog hotels, bat boxes, bird boxes, owl boxes, wild flower planting used to preserve local ecosystem.



## Awards

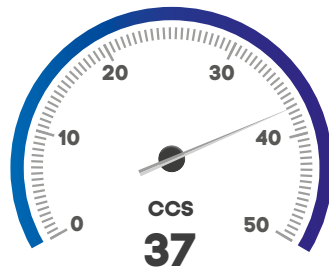
Our site manager, Steve Brocklehurst was awarded the Considerate Constructors Scheme's 'Performance Beyond Compliance'. This is awarded when scores of at least 7 points in the scheme's renowned Code of Considerate Practice are achieved, showcasing that we:

- Care about **Appearance**
- Respect the **Community**
- Protect the **Environment**
- Secure everyone's **Safety**
- Value our **Workforce**



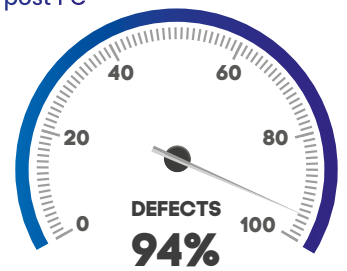
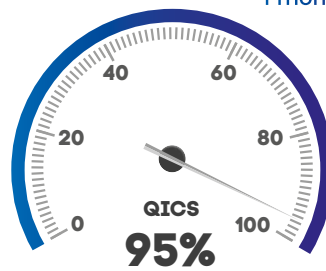
“ The site is organised well...  
 ...good safety practices and systems are in place...  
 ...treatment of the work-force is good..  
**CCS Report**

## Safety



## Quality

1 month post PC



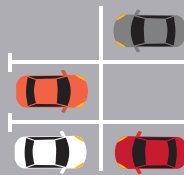
## Project highlights



**9/10**  
**CLIENT SATISFACTION**



**PERFORMANCE BEYOND COMPLIANCE**



**260**  
**SPACE CARPARK**



**WORKS COMPLETED OUT OF HOURS**

“ With levels and groundworks well managed the biggest obstacle to success was addressed early.

**Robin Blake**  
 Managing Director,  
 Ashe