



**Easlea Road,
Bury St Edmunds,
IP32 7BX**



Start 06.03.17 **Finish** 26.10.17 **Duration** 33 weeks



Value £4.1m



Project Manager
Bidwells



Client
Savilles Investment
Management



Architect
DT
Architects



Form of Contract
JCT Design & Build
2011

EASLEA ROAD STEEL FRAMED INDUSTRIAL WAREHOUSE

Introduction

This project involved the design and construction of a steel framed industrial Warehouse and Offices

In addition, associated car parking and external works were also included in the works.

Initiatives & Social Value

It was important to the client that we stayed on programme, so we installed a ring beam to allow us to progress quicker and meant we could meet the programme, which was considerably tight.

Traffic movement was reduced by keeping demolition materials on site and reusing rather than taking the materials off site and bringing them back on to site.

Not only did this avoid mass road disruptions as there were 900 lorries worth of material, this method gave a huge saving of over half a million pounds.

We sent neighbouring properties letters detailing upcoming works including the types of work/machinery and the time frame for when the works were expected to be completed.

“ Working with Ashe on the scheme has been very good and positive.

Dan Coston
Project Manager,
Bidwells

“ Overall, very happy with the work Ashe has carried out and would work with Ashe again on future schemes. The building was completed in the expected time frame.

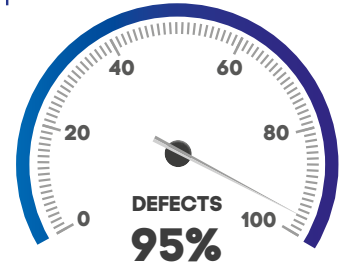
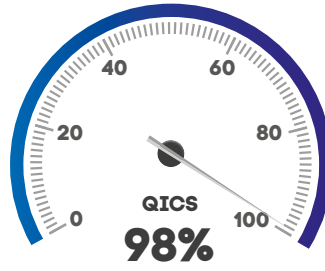
Harry De Ferry Foster
Savilles Investment
Management

Safety



Quality

1 month post PC



Project highlights



8/10
CLIENT
SATISFACTION

£500K

SAVED BY
KEEPING
DEMOLITION
MATERIALS
ON SITE



99%
WASTE DIVERTED
FROM LANDFILL

“

A well executed project under very tight time constraints and a short lead-in. Ground remediation proved particularly challenging but Julian delivered the project on time to the great satisfaction of the client and end-user.

Robin Blake
Managing Director,
Ashe