



Woodlands Road,
Enfield, London
N9 8RT



Start **14.11.16** Finish **01.12.17** Duration **54 weeks**



Value **£2.5m**



Project Manager
The London Borough
of Enfield



Client
Eldon Primary
School



Architect
AD Architects



Form of Contract
JCT standard
building contract
without quantities

ELDON PRIMARY SCHOOL DEMOLITION AND CONSTRUCTION OF NEW CANTEEN DINER

Introduction

This project comprised the demolition and construction of a new kitchen and canteen-diner, together with all associated external works including a MUGA.

Initiatives & Social Value

A number of initiatives and social value measures were implemented and put in place during this project including:

- Informative assembly held for pupils.

- Newsletters sent to keep school updated of works.
- Project maintained a low impact on the school's day-to-day activities.
- 60 lorries of asbestos was removed within 3 weeks in a safe and controlled manner.
- All workforce remained quiet during exam periods.
- A dedicated Design Manager was assigned to a traditional job, adding value to resolving design issues.



Awards

Our site manager, Peter Gibson was awarded the Considerate Constructors Scheme's 'Performance Beyond Compliance'. This is awarded when scores of at least 7 points in the scheme's renowned Code of Considerate Practice are achieved, showcasing that we:

- Care about **Appearance**
- Respect the **Community**
- Protect the **Environment**
- Secure everyone's **Safety**
- Value our **Workforce**



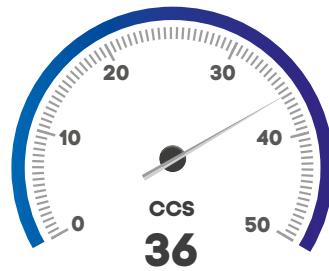
“ The site presents a positive image of the industry.

CCS Report

“ Ashe Construction have been far more superior than the previous construction company. The team have been absolutely fantastic.

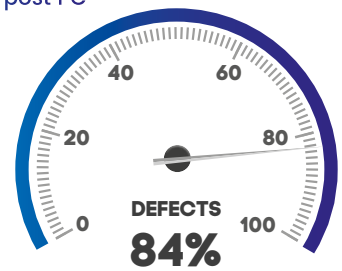
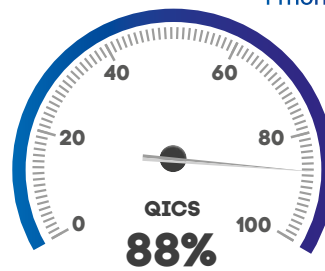
Sam Japal
School Site Manager

Safety



Quality

1 month post PC



Project highlights



**NEWSLETTERS
CIRCULATED**

**LOW
IMPACT ON
SCHOOL'S
DAILY
ACTIVITIES**



**NEW
KITCHEN/
DINER**

**60
LORRIES OF
ASBESTOS
REMOVED**



**WORKFORCE
REMAINED QUIET
DURING EXAMS**

**DEDICATED
DESIGN
MANAGER
ON TRADITIONAL JOB**



**99%
WASTE DIVERTED
FROM LANDFILL**